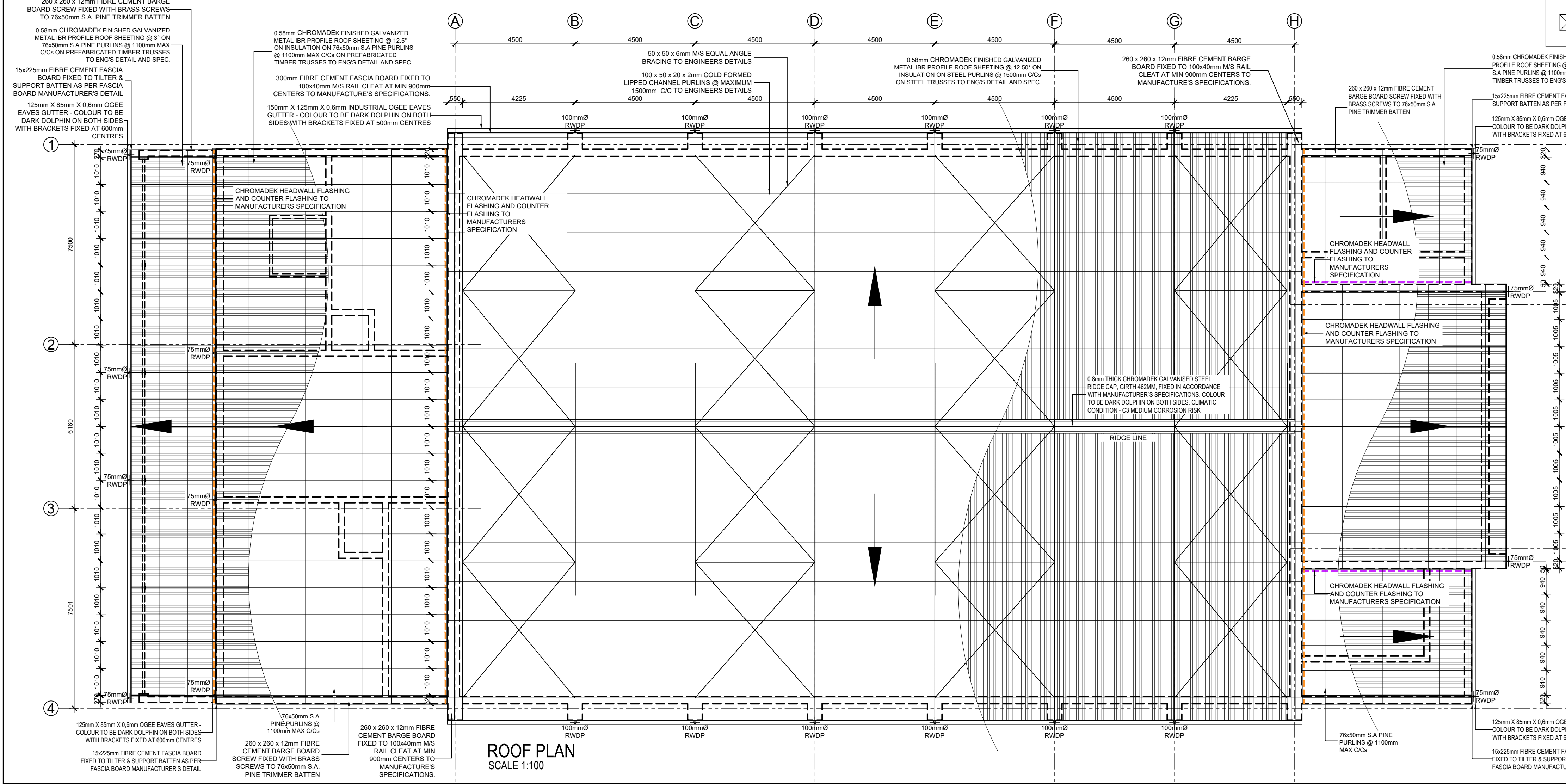


CEILING PLAN
SCALE 1:100



ROOF PLAN
SCALE 1:100

NOTES

INTERNAL WALLS -

SINCE INTERNAL WALLS ARE FACEBRICK, ALL WATER, ELECTRICAL AND GAS INSTALLATIONS TO BE DISCUSSED AND AGREED ON SITE PRIOR ERECTION OF WALLS STARTS. NO CHASING IS POSSIBLE AND NO SURFACE MOUNTED SERVICES IS ALLOWED.

FURNITURE -

FOR LOOSE AND FIXED FURNITURE REFER TO FURNITURE SCHEDULE AND JOINERY DRAWINGS.

SOLAR SHADING

VERTICAL OR HORIZONTAL SHADING DEVICES TO BE IMPLEMENTED TO EACH BLOCK INDIVIDUALLY AND AS NECESSARY TO FURTHER DETAILS.

STORM WATER

POSITION OF TANKS AND CONCRETE RAINWATER CHANNEL TO SUIT SITE CONDITIONS AS PER SITE LAYOUTS TO ACCOMMODATE STORMWATER AND OVERFLOW, TO CIVIL ENG'S DESIGN AND DETAIL

WINBLOCKS

REFER TO ELEVATIONS FOR POSITION OF WINBLOCKS

TRUSS

TRUSS MANUFACTURE TO SUBMIT A WORKSHOP DRAWING FOR APPROVAL

	3600 x 1200 x 6.4mm GYPSUM CEILING BOARDS LAID IN A STAGGERED PATTERN WITH 1" PROFILE JOINING STRIPS, FIXED WITH DRY-WALL SCREWS TO BRANDING. SCREW HEADS TO BE FILLED AND SANDED SMOOTH. CEILING TO BE PAINTED WITH UNDERCOAT & 2 COATS ACRYLIC PVA.
	UNDERSIDE OF CONCRETE TO BE PLASTERED & PAINTED WITH UNDERCOAT & 2 COATS ACRYLIC PVA.
	1200 x 600mm ACOUSTIC MINERAL FIBRE CEILING PANELS ON 15 x 24mm GALVANISED SUSPENDED GRID, INSTALLED AS PER MANUFACTURERS DETAIL AND SPECIFICATION.
	600 x 600mm ACOUSTIC MINERAL FIBRE CEILING PANELS ON 15 x 24mm GALVANISED SUSPENDED GRID, INSTALLED AS PER MANUFACTURERS DETAIL AND SPECIFICATION.
	1200 x 600mm VINYL CEILING PANELS ON 15 x 24mm GALVANISED SUSPENDED GRID, INSTALLED AS PER MANUFACTURERS DETAIL AND SPECIFICATION.
	600 x 600mm VINYL CEILING PANELS ON 15 x 24mm GALVANISED SUSPENDED GRID, INSTALLED AS PER MANUFACTURERS DETAIL AND SPECIFICATION.
	600 X 600 MILD STEEL TRAP DOOR CUT INTO CEILING BETWEEN BRANDING. TRAP DOOR TO BE PAINTED WITH UNDERCOAT & 2 COATS ACRYLIC PVA. TO MATCH CEILING FINISH.

NO.	DATE	REVISION	DRAWN
A	2021-03-01	ISSUED FOR INFORMATION I) ADDED STORE ROOM 2 II) ADDED TUCKSHOP III) CHANGED 330 x 330mm VERANDAH COLUMNS TO 100 x 100mm STEEL POSTS IV) VARIOUS AND GENERAL NOTE UPDATES	DW RJS
B	2022-07-08 2022-04-13	ISSUED FOR MEASURE ISSUED FOR INFORMATION (EFMS) 1. DWG NO. CHANGED FROM 1617 TO 2204	DW
AA	2022-08-19	ISSUED FOR MEASURE IN PREVIOUS REV B 1. LEVELS INDICATED USING 100.000 AS T.O.C.	DW

ISSUED FOR APPROVAL

KEY

PSP

ARCHITECT

-mpande-consultants
architects & project managers

13 Cumberland Street, Mithatha
P.O. Box 7105
Mithatha, 5100
Tel: 047 532 5362
Fax: 086-648-2131

18 Lower Goldenhays Drive,
Ermolenburg, Johannesburg
P.O. Box 41924
Auckland Park, 2006
Tel: 011-486-2623
Fax: 086-648-1935

Email: mpande@architect.co.za

ARCHITECTURAL PROFESSIONAL SACAP NUMBERS:
H.L. MANTEL SACAP 3045

IMPLEMENTED BY

INDEPENDENT DEVELOPMENT TRUST

SIGNATURE		DATE	SHEET NO.
DESIGNED			A1
DRAWN			SCALE 1:100
VERIFIED	-	-	STATUS LISTING I = INFORMATION FA = FOR APPROVAL T = TENDER C = CONSTRUCTION AB = AS BUILT
VALIDATED	-	-	

CLIENT

IMPLEMENTING AGENT

Province of the
EASTERN CAPE
EDUCATION

idt
INFRASTRUCTURE DEVELOPMENT TRUST

PROJECT
DOE PORTFOLIO PROGRAMME
ESTABLISHMENT OF NEW SCHOOLS
HILLBROW - SENIOR SECONDARY SCHOOL
PROVINCE: EASTERN CAPE PROVINCE

DRAWING TITLE
MULTI-PURPOSE HALL (BLOCK S-Y)
CEILING & ROOF PLAN

DRAWING DESCRIPTION

Standard Co-Ordinates:

EMS NUMBER	DISCIPLINE	DRAWING NUMBER	STATUS/REVISION
200500293	ARCH	2204 w03-07/203	FA AA